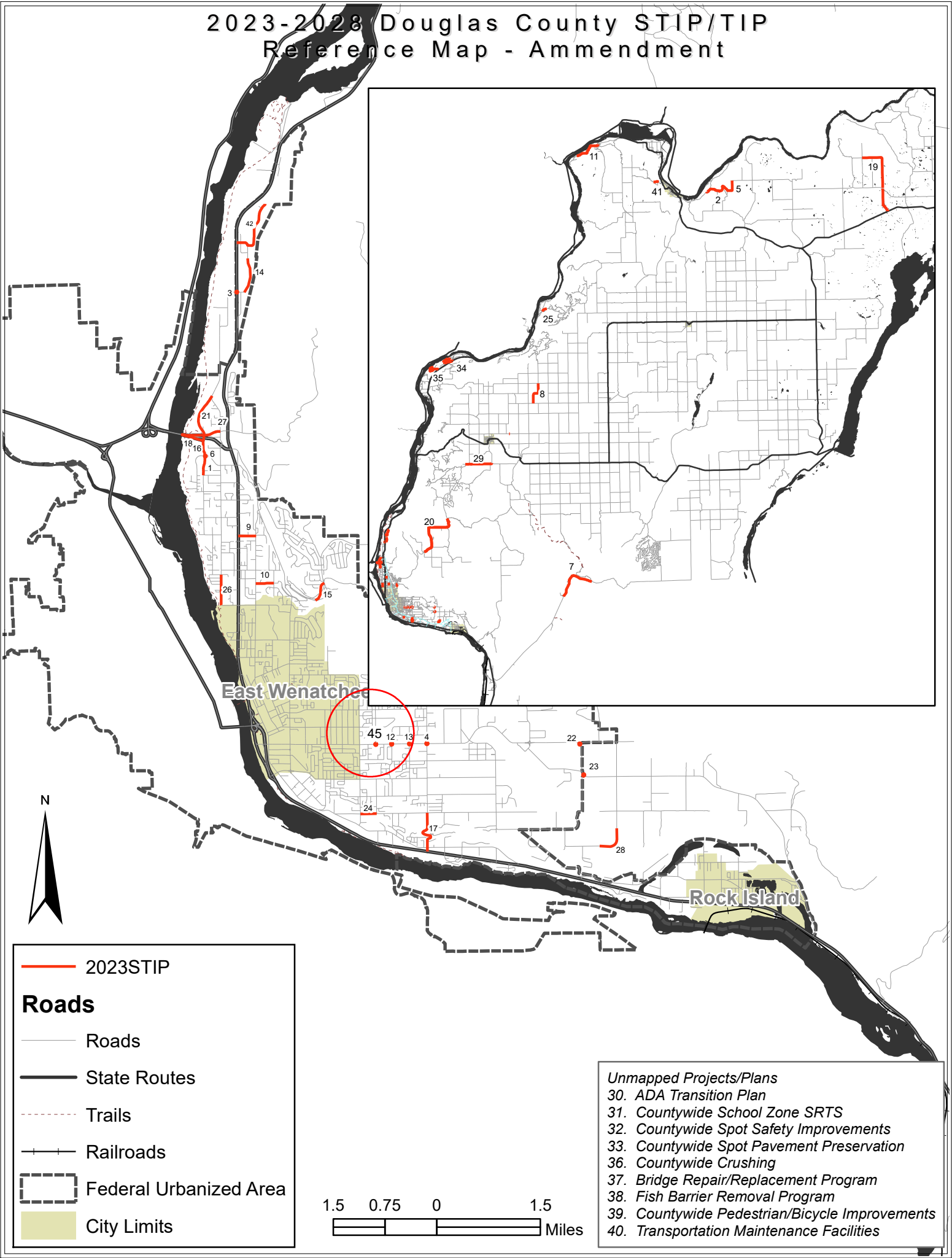


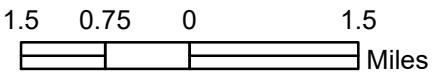
2023-2028 Douglas County STIP/TIP Reference Map - Ammendment



— 2023STIP

Roads

- Roads
- State Routes
- - - Trails
- + + Railroads
- - - Federal Urbanized Area
- City Limits



- Unmapped Projects/Plans*
- 30. ADA Transition Plan
 - 31. Countywide School Zone SRTS
 - 32. Countywide Spot Safety Improvements
 - 33. Countywide Spot Pavement Preservation
 - 36. Countywide Crushing
 - 37. Bridge Repair/Replacement Program
 - 38. Fish Barrier Removal Program
 - 39. Countywide Pedestrian/Bicycle Improvements
 - 40. Transportation Maintenance Facilities