

Primary Election Sample Ballot

August 18, 2009 - County of Douglas, State of Washington

INSTRUCTIONS

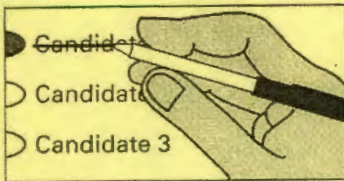
How to Vote

Use a black or blue ink pen to completely fill in the oval provided to the left of your choice.



How to Correct a Mistake

Cross out the entire candidate name or ballot measure response. You then have the option of making another choice.



Vote for only one choice for each office or ballot measure, unless the office or ballot measure specifically states otherwise. More than one vote for an office or ballot measure will be an overvote and no votes for that office or ballot measure will be counted.

DOUGLAS / CHELAN COUNTY

SPECIAL ELECTION PROPOSITION #1

Submitted by Douglas County

ENHANCED 911 SYSTEM SALES AND USE TAX

The Douglas County Board of County Commissioners adopted Resolution No. CE 09-47 concerning a proposition to fund improvements to the regional E911 system. This proposition would impose a 1/10th of 1% sales and use tax (10 cents per \$100.00) for ten years, to be used solely for financing, design, acquisition, construction, equipping, operating, maintaining, remodeling, repairing, reequipping and otherwise improving the E911 system, and is conditioned upon imposition of the same tax in Chelan County. Should this proposition be approved?

YES

NO

BRIDGEPORT SCHOOL DISTRICT #75

SPECIAL ELECTION PROPOSITION #1

Submitted by Bridgeport School District No. 75

BONDS TO CONSTRUCT A NEW VOC-AG SHOP

The Board of Directors of Bridgeport School District No. 75 adopted Resolution No. 378 concerning a proposition to finance and construct a new Voc-Ag Shop. This proposition would authorize the District to construct and equip a new Voc-Ag Shop to replace the existing facility; issue no more than \$369,000 of general obligation bonds maturing within 10 years; and levy annual excess property taxes to repay the bonds, all as provided in Resolution No. 378. Should this proposition be:

APPROVED

REJECTED

LOCAL ELECTIONS WILL APPEAR
ON THE OFFICIAL BALLOT ONLY
IN THE AREA ELIGIBLE TO VOTE
ON THEM

Sample Ballot Compiled by: Thad L. Duvall, Douglas County Auditor