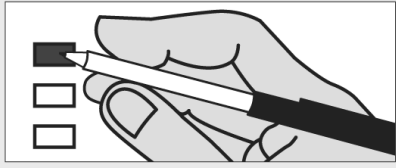


Instructions

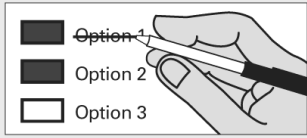
How to vote



Use a dark blue or black ink pen to completely fill in the box to the left of your choice.

Vote for one in each race. If you vote for more than one, no votes will be counted for that race.

If you make a mistake



Draw a line through the entire measure response or candidate's name.

Then you may make another choice.

Optional write-in



To vote for a candidate not listed for that race, fill in the box to the left of "write-in" and print the name on the dashed line.

READ: Each candidate for partisan office may state a political party that he or she prefers. A candidate's preference does not imply that the candidate is nominated or endorsed by the party, or that the party approves of or associates with that candidate.

Federal: Partisan Offices

United States Senator

Michael Baumgartner
(Prefers Republican Party)

Will Baker
(Prefers Reform Party)

Chuck Jackson
(Prefers Republican Party)

Timmy (Doc) Wilson
(Prefers Democratic Party)

Art Coday
(Prefers Republican Party)

Maria Cantwell
(Prefers Democratic Party)

Glen (Stocky) R. Stockwell
(Prefers Republican Party)

Mike the Mover
(Prefers Republican Party)

Write-in

**U.S. Representative
Congressional District 4**

Mary Baechler
(Prefers Democratic Party)

Doc Hastings
(Prefers Republican Party)

Mohammad H. Said
(Prefers Democratic Party)

Jamie Wheeler
(Prefers Republican Party)

Write-in

**U.S. Representative
Congressional District 8**

Dave Reichert
(Prefers Republican Party)

Keith Swank
(Prefers Republican Party)

James Windle
(States No Party Preference)

Karen Porterfield
(Prefers Democratic Party)

Keith Arnold
(Prefers Democratic Party)

Ernest Huber
(Prefers Republican Party)

Write-in

State: Partisan Offices

Governor

Rob Hill
(Prefers Democratic Party)

Rob McKenna
(Prefers Republican Party)

Jay Inslee
(Prefers Democratic Party)

James White
(Prefers Independent Party)

Christian Joubert
(States No Party Preference)

Shahram Hadian
(Prefers Republican Party)

L. Dale Sorgen
(Prefers Independent Party)

Max Sampson
(Prefers Republican Party)

Javier O. Lopez
(Prefers Republican Party)

Write-in

Lieutenant Governor

Glenn Anderson
(Prefers Indep Republican Party)

Brad Owen
(Prefers Democrat Party)

James Robert Deal
(States No Party Preference)

Bill Finkbeiner
(Prefers Republican Party)

Dave T. Sumner IV
(Prefers Neopopulist Party)

Mark Greene
(Prefers Democracy Indep. Party)

Write-in

Secretary of State

Jim Kastama
(Prefers Democratic Party)

David J. Anderson
(States No Party Preference)

Sam Wright
(Prefers The Human Rights Party)

Karen Murray
(Prefers Constitution Party)

Kathleen Drew
(Prefers Democratic Party)

Kim Wyman
(Prefers Republican Party)

Greg Nickels
(Prefers Democratic Party)

Write-in

State Treasurer

Jim McIntire
(Prefers Democratic Party)

Write-in

12000010100011

Sample Ballot

100000002130

Sample Ballot

1133031102

12000010200018

Sample Ballot

100000002227

Sample Ballot

1133031102

State Auditor

Troy Kelley
(Prefers Democratic Party)

James Watkins
(Prefers Republican Party)

Mark Miloscia
(Prefers Democratic Party)

Craig Pridemore
(Prefers Democratic Party)

Write-in

State Attorney General

Bob Ferguson
(Prefers Democratic Party)

Reagan Dunn
(Prefers Republican Party)

Stephen Pidgeon
(Prefers Republican Party)

Write-in

Commissioner of Public Lands

Stephen A. Sharon
(States No Party Preference)

Peter J. Goldmark
(Prefers Democratic Party)

Clint Didier
(Prefers Republican Party)

Write-in

State: Nonpartisan Office

Superintendent of Public Instruction

James Bauckman

Randy I. Dorn

Don Hansler

John Patterson Blair

Ronald L. (Ron) Higgins

Write-in

State: Partisan Office

Insurance Commissioner

John R. Adams
(Prefers Republican Party)

Mike Kreidler
(Prefers Democratic Party)

Scott Reilly
(Prefers Republican Party)

Brian C. Berend
(Prefers Independent Party)

Write-in

Legislative: Partisan Office

State Senator District 12

Linda Evans Parlette
(Prefers GOP Party)

Write-in

State Representative District #12, Position 1

Cary Condotta
(Prefers Republican Party)

Stan Morse
(Prefers Republican Party)

Write-in

State Representative District #12, Position 2

Mike Armstrong
(Prefers Republican Party)

Brad Hawkins
(Prefers Republican Party)

Write-in

County: Partisan Offices

County Commissioner District #1

Carol Kavanaugh
(Prefers Republican Party)

Tom D. Irvin
(Prefers GOP Party)

Ken Stanton
(Prefers Republican Party)

Write-in

County Commissioner District #2

Edmund (Ed) H. Daling
(Prefers Republican Party)

Dale L. Snyder
(Prefers Republican Party)

Write-in

Judicial: Nonpartisan Offices

Supreme Court Justice Position 2

Douglas W. McQuaid

Susan Owens

Scott Stafne

Write-in

Supreme Court Justice Position 8
6 Year Term - Short & Full

Bruce O. Danielson

Steve Gonzalez

Write-in

Supreme Court Justice Position 9

Bruce Hilyer

Sheryl Gordon McCloud

Richard B. Sanders

John W. Ladenburg

Write-in

Court of Appeals, Division 3, District 3 Judge Position 2

Devin Poulson

Teresa C. Kulik

Write-in

Superior Court Judge Position 1

John Hotchkiss

Write-in

Election of Political Party Precinct Committee Officer

For this office only: In order to vote for precinct committee officer, a partisan office, you must affirm that you are a Democrat or a Republican and may vote only for one candidate from the party you select. Your vote for a candidate affirms your affiliation with the same party as the candidate. This preference is private and will not be matched to your name or shared.

Precinct Committee Officer Precinct 111

Gerald M. Chapton - Rep
I affirm I am a Republican

Ted Merchant - Rep
I affirm I am a Republican

Precinct Committee Officer Precinct 206

Melissa Mathison - Rep
I affirm I am a Republican

Joe Hinkle - Rep
I affirm I am a Republican

Precinct Committee Officer Precinct 215

Don Collier - Rep
I affirm I am a Republican

Jacob S. Johnson - Rep
I affirm I am a Republican

Precinct Committee Officer Precinct 301

Dedra (Dee) Drewry - Rep
I affirm I am a Republican

Miles Darlington - Rep
I affirm I am a Republican