

Instructions

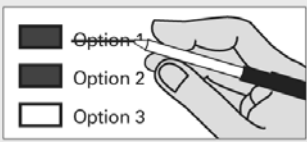
How to vote



Use a dark blue or black ink pen to completely fill in the box to the left of your choice.

Vote for one in each race. If you vote for more than one, no votes will be counted for that race.

If you make a mistake



Draw a line through the entire measure response or candidate's name.

Then you may make another choice.

Optional write-in



To vote for a candidate not listed for that race, fill in the box to the left of "write-in" and print the name on the dashed line.

Who donates to campaigns?
View contributors for candidates and measures
Public Disclosure Commission
www.pdc.wa.gov
Toll Free (877) 601-2828

Start voting here

State Initiatives

Initiative Measure No. 1351

Initiative Measure No. 1351 concerns K-12 education. This measure would direct the legislature to allocate funds to reduce class sizes and increase staffing support for students in all K-12 grades, with additional class-size reductions and staffing increases in high-poverty schools.
Should this measure be enacted into law?

Yes

No

Initiative Measure No. 591

Initiative Measure No. 591 concerns firearms. This measure would prohibit government agencies from confiscating guns or other firearms from citizens without due process, or from requiring background checks on firearm recipients unless a uniform national standard is required.
Should this measure be enacted into law?

Yes

No

Initiative Measure No. 594

Initiative Measure No. 594 concerns background checks for firearm sales and transfers. This measure would apply currently used criminal and public safety background checks by licensed dealers to all firearm sales and transfers, including gun show and online sales, with specific exceptions.
Should this measure be enacted into law?

Yes

No

Advisory Votes

Advisory Vote No. 8
Senate Bill 6505

The legislature eliminated, without a vote of the people, agricultural excise tax preferences for various aspects of the marijuana industry, costing an estimated \$24,903,000 in the first ten years, for government spending. This tax increase should be:

Repealed

Maintained

Advisory Vote No. 9
Engrossed Substitute House Bill 1287

The legislature imposed, without a vote of the people, the leasehold excise tax on certain leasehold interests in tribal property, costing an estimated \$1,298,000 in the first ten years, for government spending. This tax increase should be:

Repealed

Maintained

READ: Each candidate for partisan office may state a political party that he or she prefers. A candidate's preference does not imply that the candidate is nominated or endorsed by the party, or that the party approves of or associates with that candidate.

Federal: Partisan Offices

Congressional District 4
U.S. Representative

Clint Didier

(Prefers Republican Party)

Dan Newhouse

(Prefers Republican Party)

Write-in

Congressional District 8
U.S. Representative

Dave Reichert

(Prefers Republican Party)

Jason Ritchie

(Prefers Democratic Party)

Write-in

Legislative: Partisan Office

Legislative District 12
State Representative Pos. 1

Cary Condotta

(Prefers Republican Party)

Write-in

Legislative District 12
State Representative Pos. 2

Brad Hawkins

(Prefers Republican Party)

Write-in

County: Partisan Offices

Douglas County Assessor

Jim Ruud

(Prefers Republican Party)

Write-in

Continue voting next side



Sample Ballot

Sample Ballot

100000001160

1093031115

12000010100011

Sample/Provisional Ballot
General Election
Douglas County, Washington
November 04, 2014

12000010200018

Sample Ballot

100000001257

Sample Ballot

1093031115

Douglas County Auditor

Thad Duvall

(Prefers Democrat Party)

Greg Wright

(Prefers Republican Party)

Write-in

Douglas County Clerk

Tristen Worthen

(Prefers Republican Party)

Laurie Miller

(Prefers Republican Party)

Write-in

Douglas County Commissioner 3

Steve Jenkins

(Prefers Republican Party)

Write-in

Douglas County Prosecuting Attorney

Steve Clem

(States No Party Preference)

Write-in

Douglas County Sheriff

Harvey Gjesdal

(Prefers Republican Party)

Write-in

Douglas County Treasurer

Nona Haberman

(Prefers Republican Party)

Write-in

Judicial: Non-Partisan Offices

Supreme Court Justice
Position 1
2 Year Unexpired Term

Mary Yu

Write-in

Supreme Court Justice
Position 3

Mary E. Fairhurst

Write-in

Supreme Court Justice
Position 4

Eddie Yoon

Charles W. Johnson

Write-in

Supreme Court Justice
Position 7

Debra L. Stephens

John (Zamboni) Scannell

Write-in

Court of Appeals, Division 3
District 3 Judge Position 1

Stephen M. Brown

Write-in

Court of Appeals, Division 3
District 3 Judge Position 2
4 Year Unexpired Term

Rob Lawrence-Berrey

Write-in

Douglas County
District Court Judge

Judith L. McCauley

Write-in

Hospital District #2

Hospital District No. 2
HOSPITAL DISTRICT ONE YEAR
EXCESS LEVY

The Douglas County Hospital District No. 2 (Ambulance Services) Board of Commissioners adopted Resolution #67 on July 16, 2014, containing a proposition to finance maintenance and operation. This proposition would authorize the district to levy excess taxes upon all taxable property within the district in the sum of \$65,000, requiring collection of approximately \$0.40 per \$1,000 of assessed valuation in 2015. Should this proposition be approved?

YES

NO

Local

Town Of Waterville
MOSQUITO CONTROL DISTRICT
ONE YEAR EXCESS LEVY

The Waterville Mosquito Control District Board of Trustees adopted Resolution No. 2014-03, containing a proposition to finance operations. This proposition would authorize the district to levy excess taxes upon all taxable property within the district in the amount of \$0.25 per \$1,000 of assessed valuation for collection in 2015. Should this proposition be approved?

YES

NO

Cemetery District

Cemetery District No.2
ONE YEAR MAINTENANCE AND
OPERATIONS EXCESS TAX LEVY

The Douglas County Cemetery District No. 2 Board of Commissioners adopted Resolution #2014/001 on July 14, 2014, containing a proposition to finance maintenance and operations. This proposition would authorize the district to levy excess taxes upon all taxable property within the district in the amount of \$40,000, requiring collection of approximately \$0.27 per \$1,000 of assessed valuation in 2015. Should this proposition be approved?

YES

NO

County: Non-Partisan Office

PUD
Commissioner 2

Steven E. Pauly

Molly Doneen Simpson

Write-in