

Vote Both Sides

Special Election  
 Sample/Provisional  
 Douglas County, Washington  
 February 11, 2014

Precinct *Sample-Prov*

**Instructions**

 **Start voting here**

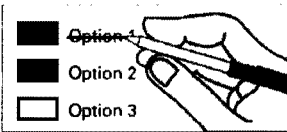
**How to vote**



Use a dark blue or black ink pen to completely fill in the box to the left of your choice.

Vote for one in each race. If you vote for more than one, no votes will be counted for that race.

**If you make a mistake**



Draw a line through the entire measure response or candidate's name. Then you may make another choice.

**School District**

LAKE CHELAN SCHOOL DISTRICT NO. 129  
 Proposition 1  
 REPLACEMENT MAINTENANCE AND OPERATION LEVY

The Board of Directors of Lake Chelan School District No. 129 adopted Resolution No. 2013-06, concerning a proposition to finance maintenance and operation expenses. This proposition would authorize the District to levy the following excess taxes, in place of an expiring levy, on all taxable property within the District, for support of the District's General Fund educational maintenance and operation expenses:

Collection Year	Approximate Levy	
	Rate/\$1000	Levy Amount
2015	\$1.73	\$2,980,343
2016	\$1.77	\$3,039,950

all as provided in Resolution No. 2013-06. Should this proposition be approved?

- LEVY YES  
 LEVY NO

BREWSTER SCHOOL DISTRICT NO. 111/203J  
 Proposition 1  
 REPLACEMENT OF EXPIRING MAINTENANCE AND OPERATION LEVY

The Board of Directors of Brewster School District adopted Resolution No. 01-13/14 concerning a proposition to finance maintenance and operation expenses. This proposition would authorize the District to meet the educational needs of its students by levying the following excess taxes, in place of an expiring levy, upon all taxable property within the District, for support of the District's General Fund educational maintenance and operation expenses:


Collection Year	Approximate	
	Rate Per \$1000 Assessed Value	Levy Amount
2015	\$2.87	\$1,015,494
2016	\$2.91	\$1,055,494
2017	\$2.98	\$1,095,494
2018	\$2.98	\$1,095,494

All as specified in District Resolution No. 1-13/14. Should this proposition be approved?

12000010100011

Sample Ballot

30000004157

 **Who donates to campaigns?**  
 View contributors for candidates and measures  
 Public Disclosure Commission  
 www.pdc.wa.gov  
 Toll Free (877) 601-2828

Sample Ballot

0623031195

Vote Both Sides

Special Election  
 Sample/Provisional  
 Douglas County, Washington  
 February 11, 2014

Precinct *Sample-Prov*

**Bridgeport School District No. 75**  
**Proposition 1**  
**BONDS TO CONSTRUCT AN ELEMENTARY SCHOOL ADDITION**  
 The Board of Directors of Bridgeport School District No. 75 adopted Resolution No. 423, concerning a proposition to finance construction of an elementary school addition. This proposition would authorize the District to replace the existing 1977 building pods (portable bricked in buildings) by constructing and equipping a new addition to Bridgeport Elementary School that will include classrooms, computer lab, music room, kitchen facilities, multipurpose room, playground, administrative/support work areas and other capital improvements; issue no more than \$3,900,000 of general obligation bonds maturing within 18 years; and levy annual excess property taxes to repay the bonds, as provided in Resolution No. 423. Should this proposition be:

- APPROVED
- REJECTED

**Orondo School District No. 13**  
**Proposition 1**  
**TWO-YEAR REPLACEMENT MAINTENANCE AND OPERATION LEVY**  
 The Board of Directors of Orondo School District No. 13 adopted Resolution No. 13-4 concerning a proposition to finance District maintenance and operation expenses. This proposition would authorize the District to levy the following excess taxes, in place of an expiring levy, upon all taxable property within the District for support of the District's General Fund educational maintenance and operation expenses:

Collection Year	Estimated Levy	
	Rate Per \$1,000 Assessed Value	Total Levy Amount
2015	\$2.59	\$874,000
2016	\$2.62	\$882,650

all as provided in Resolution No.13-4. Should this proposition be approved?

- LEVY YES
- LEVY NO

**Palisades School District No. 102**  
**Proposition 1**  
**TWO-YEAR REPLACEMENT MAINTENANCE AND OPERATION LEVY**  
 The Board of Directors of Palisades School District No.102 adopted Resolution No. 2013-03 concerning a proposition to finance District maintenance and operation expenses. This proposition would authorize the District to levy the following excess taxes, in place of an expiring levy, upon all taxable property within the District for support of the District's General Fund maintenance and operation expenses:

Collection Years	Approximate Levy	
	Rate Per \$1,000 Assessed Value	Total Levy Amount
2015	\$1.97	\$96,467
2016	\$1.97	\$98,396

all as provided in Resolution No. 2013-03. Should this proposition be approved?

- LEVY YES
- LEVY NO

**Waterville School District No. 209**  
**Proposition 1**  
**REPLACEMENT MAINTENANCE AND OPERATION TAX LEVY**  
 The Board of Directors of Waterville School District No. 209 adopted Resolution No. 2013/2014-001 concerning a proposition to finance maintenance and operations. This proposition would authorize the District to levy the following excess taxes, in place of an expiring levy, upon all taxable property within the District for support of the District's General Fund maintenance and operation expenses:

Collection Years	Estimated Levy	
	Rate Per \$1,000 Assessed Value	Total Levy Amount
2015	\$4.62	\$800,000
2016	\$4.58	\$800,000
2017	\$4.53	\$800,000
2018	\$4.49	\$800,000

all as provided in Resolution No. 2013/2014-001. Should this proposition be approved?

- LEVY YES
- LEVY NO

12000010200018

Sample Ballot

300000004254

Sample Ballot

0623031195