

Instructions

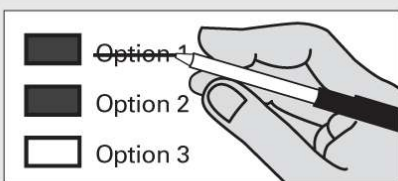
How to vote



Use a dark blue or black ink pen to completely fill in the box to the left of your choice.

Vote for one in each race. If you vote for more than one, no votes will be counted for that race.

If you make a mistake



Draw a line through the entire measure response or candidate's name.

Then you may make another choice.

Optional write-in



To vote for a candidate not listed for that race, fill in the box to the left of "or write-in" and print the name on the dashed line.

i Who donates to campaigns?
View contributors for candidates and measures

Public Disclosure Commission
www.pdc.wa.gov
Toll Free (877) 601-2828

READ:
Each Candidate for partisan office may state a political party that he or she prefers. A candidate's preference does not imply that the candidate is nominated or endorsed by the party, or that the party approves of or associates with that candidate.

Start Voting Here --->

Federal: Partisan Offices

U.S. Senator

- Philip L. Cornell**
(Prefers Democratic Party)
- Sam Wright**
(Prefers The Human Rights Party)
- Chris Vance**
(Prefers Republican Party)
- Uncle Mover**
(Prefers Republican Party)
- Zach Haller**
(Prefers Independent Party)
- Donna Rae Lands**
(Prefers Conservative Party)
- Mohammad Said**
(Prefers Democratic Party)
- Eric John Makus**
(Prefers Republican Party)
- Alex Tsimerman**
(Prefers Standupamerica Party)
- Dr Pano Churchill**
(Prefers Lincoln Caucus Party)
- Patty Murray**
(Prefers Democratic Party)
- Ted Cummings**
(Prefers Independent Party)
- Thor Amundson**
(Prefers Democratic Party)
- Scott Nazarino**
(Prefers Republican Party)
- Mike Luke**
(Prefers Libertarian Party)
- Chuck Jackson**
(Prefers Independent Party)
- Jeremy Teuton**
(Prefers System Reboot Party)
- Write-in:**

U.S. Representative

Congressional District #4

- Dan Newhouse**
(Prefers Republican Party)
- Glenn M. Jakeman**
(Prefers Republican Party)
- Doug McKinley**
(Prefers Democratic Party)
- Clint Didier**
(Prefers Republican Party)
- John (the man) Malan**
(Prefers Democratic Party)
- Write-in:**

U.S. Representative

Congressional District #8

- Dave Reichert**
(Prefers Republican Party)
- Margaret M. Walsh**
(Prefers We R Independent Party)
- Alida Skold**
(Prefers Democratic Party)
- Tony Ventrella**
(Prefers Democratic Party)
- Santiago Ramos**
(Prefers Democratic Party)
- Keith Arnold**
(Prefers Independent///No Party)
- Write-in:**

Turn Ballot Over

Continue voting
next side



State: Partisan Offices

Governor

Goodspaceguy
(Prefers Republican Party)

Bill Hirt
(Prefers Republican Party)

Mary Martin
(Prefers Socialist Worker Party)

Steve Rubenstein
(Prefers Independent Party)

David W. Blomstrom
(Prefers Fifth Republic Party)

Johnathan Dodds
(Prefers Democratic Party)

Patrick O'Rourke
(Prefers Democratic Party)

Christian Pierre Joubert
(Prefers Holistic Party)

James Robert Deal
(Prefers Democratic Party)

Jay Inslee
(Prefers Democratic Party)

Bill Bryant
(Prefers Republican Party)

Write-in:

Lt. Governor

Marty McClendon
(Prefers Republican Party)

Mark Greene
(Prefers Citizens Party)

Phillip Yin
(Prefers Republican Party)

Steve Hobbs
(Prefers Democratic Party)

Karen Fraser
(Prefers Democratic Party)

Bill Penor
(Prefers Republican Party)

Paul Addis
(Prefers Libertarian Party)

Daniel B. Davies
(States No Party Preference)

Karen Wallace
(Prefers Democratic Party)

Cyrus Habib
(Prefers Democratic Party)

Javier H. Figueroa
(Prefers Republican Party)

Write-in:

Secretary of State

Tina Podlodowski
(Prefers Democratic Party)

Kim Wyman
(Prefers Republican Party)

Tim Turner
(Prefers Libertarian Party)

Write-in:

State Treasurer

John Paul Comerford
(Prefers Democratic Party)

Marko Liias
(Prefers Democratic Party)

Duane Davidson
(Prefers Republican Party)

Michael Waite
(Prefers Republican Party)

Alec Fiskien
(Prefers Democratic Party)

Write-in:

State Auditor

Pat (Patrice) McCarthy
(Prefers Democratic Party)

David Golden
(States No Party Preference)

Mark Wilson
(Prefers Independent Party)

Mark Miloscia
(Prefers Republican Party)

Jeff Sprung
(Prefers Democratic Party)

Write-in:

Attorney General

Bob Ferguson
(Prefers Democratic Party)

Joshua B. Trumbull
(Prefers Libertarian Party)

Write-in:

Commissioner of Public Lands

Hilary Franz
(Prefers Democratic Party)

Mary Verner
(Prefers Democratic Party)

Steven M. Nielson
(Prefers Libertarian Party)

Dave Upthegrove
(Prefers Democratic Party)


Karen Porterfield
(Prefers Democratic Party)

Steve McLaughlin
(Prefers Republican Party)

John Stillings
(Prefers Democratic Party)

Write-in:

Continue to Next Page

Continue voting next page 

State: Nonpartisan Offices

Superintendent of Public Instruction

- John Patterson Blair
- Chris Reykdal
- Ron Higgins
- Grazyna Prouty
- Robin Fleming
- Al Runte
- Erin Jones
- KumRoan (Mr. Mak) Maksirisombat
- David Spring
- Write-in:

State: Partisan Offices

Insurance Commissioner

- Mike Kreidler
(Prefers Democratic Party)
- Justin Murta
(Prefers Libertarian Party)
- Richard Schrock
(Prefers Republican Party)
- Write-in:

Legislative District #12: Partisan Offices

State Senator

- Brad Hawkins
(Prefers Republican Party)
- Jon Wyss
(Prefers Republican Party)
- Write-in:

State Representative

Position 1

- Cary Condotta
(Prefers Republican Party)
- Dan Maher
(Prefers Democratic Party)
- Write-in:

State Representative

Position 2

- Mike Steele
(Prefers Republican Party)
- Jerry Paine
(Prefers Republican Party)
- Danny Stone
(Prefers Republican Party)
- Garn G. Christensen
(Prefers Republican Party)
- Write-in:

County: Partisan Office

County Commissioner

District 1

- Pat Haley
(Prefers Republican Party)
- Dan Sutton
(Prefers Republican Party)
- Dennis Hendricks
(Prefers Republican Party)
- Write-in:

County Commissioner

District 2

- Kyle Steinburg
(Prefers Republican Party)
- Dale L. Snyder
(Prefers Republican Party)
- Jason Fonville
(Prefers Libertarian Party)
- Write-in:

Judicial: Nonpartisan Office

Supreme Court Justice

Position 5

- Barbara Madsen
- Greg Zempel
- (Zamboni) John Scannell
- Write-in:

For This Office Only:
In order to vote for Precinct Committee Officer, a partisan office, you must affirm that you are a Democrat or a Republican and may vote only for one candidate from the party you select. Your vote for a candidate affirms your affiliation with the same party as the candidate. This preference is private and will not be matched to your name or shared.

Precinct Committee Officer

Precinct 301

- Jim Blair REP
I affirm I am Republican
- Dee Drewry REP
I Affirm I am Republican

Hospital District

Okanogan Hospital District #1 Okanogan and Douglas Counties

Proposition 1

One - Year Special Levy
The Commission of Public Hospital District No. 1, Okanogan and Douglas Counties, adopted Resolution No. 2016-4 concerning a proposition to finance and maintain the availability of essential health care services. If approved, this ballot proposition will provide funds to pay for the maintenance, development and expansion of the District's health care facilities and services by levying in 2016 for collection in 2017 a special one-year property tax in the amount of \$2,080,271, resulting in an estimated levy rate, in excess of the District's regular property tax levy, of \$1.00 per \$1,000 of assessed value. Should this proposition be:

- Approved
- Rejected

Okanogan Hospital District #1 Okanogan and Douglas Counties

Proposition 2

Levy Lid Lift
The Commission of Public Hospital District No.1, Okanogan and Douglas Counties, adopted Resolution No. 2016-5 concerning an increase in the District's regular property tax levy. If approved, this proposition would provide funding for the maintenance, development and expansion of the District's health care facilities and services. It authorizes a maximum regular property levy rate for collection in 2017 of \$0.075/\$1,00 assessed value (which is \$0.13 greater than the 2016 levy rate.) The 2016 levy amount will be used to calculate subsequent levy limits in subsequent years:

- Approved
- Rejected

This page intentionally left blank