

Sample Ballot

2021 Primary Election
August 3, 2021
Douglas County

Page 1 of 1

How to vote

Use a dark blue or black ink pen to completely fill in the box to the left of your choice. Vote for one response in each race or resolution. If you vote for more than one, no votes will be counted for that race.



If you make a mistake

Draw a line through the entire candidate name or measure response. Then you may make another choice.



Who donates to campaigns?

View contributors for candidates and measures

Public Disclosure Commission

www.pdc.wa.gov
Toll Free (877) 601-2828

Start Voting Here

Hospital District

Public Hospital District #1 Okanogan and Douglas Counties

Proposition No.1

One-Year Special Levy

The Commission of Public Hospital District No. 1, Okanogan and Douglas Counties, adopted Resolution No. 2021-07 concerning a proposition to finance and maintain the availability of essential health care services. If approved, this ballot proposition will provide funds to pay for the maintenance, development and expansion of the District's health care facilities and services by levying in 2021 for collection in 2022 a special one-year property tax in the amount of \$840,000, resulting in an estimated levy rate, in excess of the District's regular property tax levy, of 33 cents per \$1,000 of assessed value.

Should this proposition be:

Approved

Rejected

School District

Bridgeport School District #75 Director #2 @ Large

Walter Gomez

Juan R Morales

Lorena Vazquez

Kathy (Katherine) Corbin

Write-in

Sample Ballot

2021 Primary Election
August 3, 2021
Douglas County

Page 1 of 1

How to vote

Use a dark blue or black ink pen to completely fill in the box to the left of your choice. Vote for one response in each race or resolution. If you vote for more than one, no votes will be counted for that race.



If you make a mistake

Draw a line through the entire candidate name or measure response. Then you may make another choice.



Who donates to campaigns?

View contributors for candidates and measures

Public Disclosure Commission

www.pdc.wa.gov
Toll Free (877) 601-2828

Start Voting Here

School District

Eastmont School District Director #3

Rama Mohr

Annette Eggers

Jason Heinz

Write-in

Eastmont School District Director #4 @ Large

Joy Dawe

John "Stew" Steward Jr.

Dave Piepel

Charyl Baziak

Write-in

Sample Ballot

2021 Primary Election
August 3, 2021
Douglas County

Page 1 of 1

How to vote

Use a dark blue or black ink pen to completely fill in the box to the left of your choice. Vote for one response in each race or resolution. If you vote for more than one, no votes will be counted for that race.



If you make a mistake

Draw a line through the entire candidate name or measure response. Then you may make another choice.



Who donates to campaigns?

View contributors for candidates and measures

Public Disclosure Commission

www.pdc.wa.gov
Toll Free (877) 601-2828

Start Voting Here

School District

Lake Chelan School District No. 129
School Board Member Director District #1

Stephanie Fuller

Cole Soreano

Brooke Isaak

Write-in

Sample Ballot

2021 Primary Election
August 3, 2021
Douglas County

Page 1 of 1

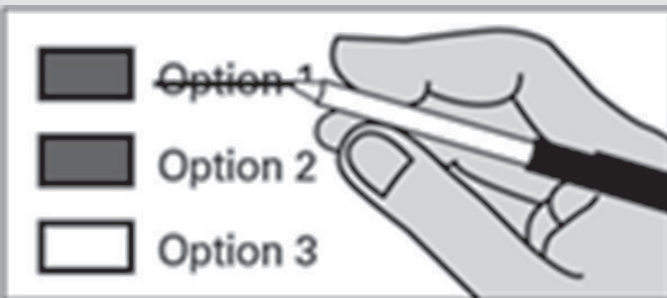
How to vote

Use a dark blue or black ink pen to completely fill in the box to the left of your choice. Vote for one response in each race or resolution. If you vote for more than one, no votes will be counted for that race.



If you make a mistake

Draw a line through the entire candidate name or measure response. Then you may make another choice.



Who donates to campaigns?

View contributors for candidates and measures

Public Disclosure Commission

www.pdc.wa.gov
Toll Free (877) 601-2828

Start Voting Here

School District

Quincy School District #144
School Director #05 @ Large

Liliana Garcia

Chad Lower

Enrique Henry Hernandez

Write-in

Sample Ballot

2021 Primary Election
August 3, 2021
Douglas County

Page 1 of 1

How to vote

Use a dark blue or black ink pen to completely fill in the box to the left of your choice. Vote for one response in each race or resolution. If you vote for more than one, no votes will be counted for that race.



If you make a mistake

Draw a line through the entire candidate name or measure response. Then you may make another choice.



Who donates to campaigns?

View contributors for candidates and measures

Public Disclosure Commission

www.pdc.wa.gov
Toll Free (877) 601-2828

Start Voting Here

Local Issue

Town of Mansfield Council Position 4

Thomas J. Tupling

Kris Neff

Gerald Poole